

# Quick Check Bay Inspection

Comprehensive Inspection System for Multiple Environments

**NOW AVAILABLE WITH  
PUSH REPORTS**



# Quick Check<sup>®</sup> identifies profitable repair opportunities

Choose your inspection system:

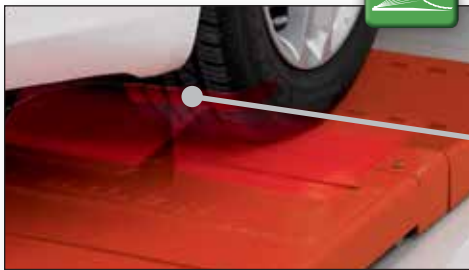
## Wheel Alignment



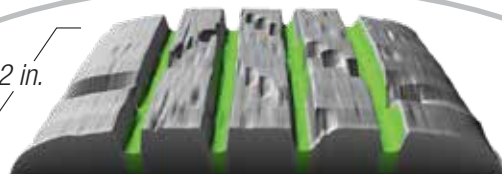
- ✓ Fast verification of alignment need
- ✓ Boost traffic to most profitable undercar service



## Quick Tread<sup>®</sup>



2 in.



**Actual image of tire!**

- ✓ Automatically measures tread depth in motion
- ✓ Available as stand-alone system

## Handheld Tread Depth



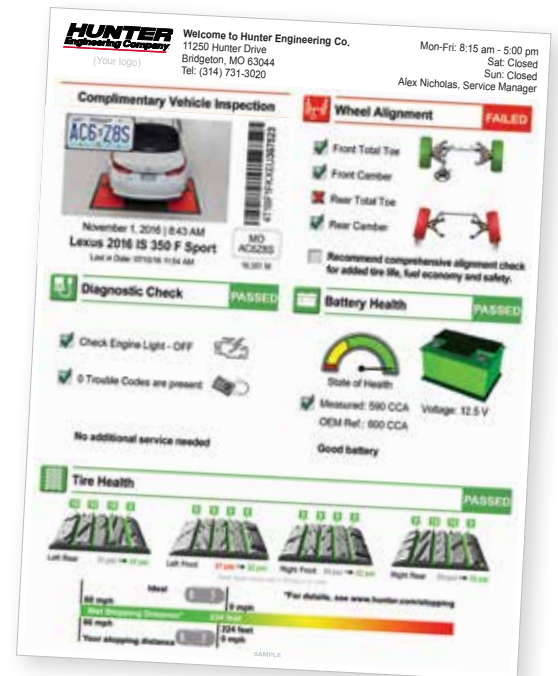
- ✓ Manual tire tread depth check

## Quick ID<sup>™</sup>



- ✓ Accelerate inspection process
- ✓ Automatic vehicle identification

# ities in 2 minutes or less!\*



## Tire Pressure

- ✓ Automatically adjusts air pressure to user-entered OEM spec
- ✓ Records before and after pressures



## Battery Health



- ✓ Tests battery to OEM specs
- ✓ Sends results to console wirelessly

## Diagnostic Check



- ✓ Retrieves VIN and emission system codes from OBD-II

\*Test performed using drive over tread depth unit.

# Wheel Alignment



Hunter's patented alignment check system is the quickest way to measure alignment angles that affect tire life. The test takes less than a minute to produce total toe and camber measurements for both axles. Results are displayed on the customer printout in easy-to-understand, color-coded graphics.



*Drive-thru configuration*

- ✓ Check every vehicle that enters shop
- ✓ Fastest way to check tire wear angles
- ✓ Doesn't tie up alignment bay
- ✓ Available in several configurations to accommodate shop needs
- ✓ Gain more repair authorizations with clear, informative printouts

## STANDARD Barcode Reader



- ✓ Enter vehicle into system
- ✓ Recall OE specs

**SmartSpec greatly reduces vehicle specification selections**

## Wheel alignment check features proven HawkEye Elite® technology

### PATENTED



**QuickGrip™ adaptors**

- ✓ Fast setups
- ✓ Adjusts easily to various wheel sizes
- ✓ No metal-to-metal contact
- ✓ No knob twisting
- ✓ Lightweight
- ✓ Durable
- ✓ Low-maintenance

### PATENTED



**HawkEye Elite® cameras**

- ✓ High-resolution cameras
- ✓ Dedicated camera for each wheel
- ✓ Pinpoint accuracy
- ✓ Compensate sensors and capture measurements with one forward roll

0:58  
SECONDS

Choose from several configurations to best fit your shop




Drive-under configuration\*





Cabinet mount, drive-in/back-out bay


Alignment results your customers will see...

 **Wheel Alignment** **PASSED**

- Front Total Toe
- Front Camber
- Rear Total Toe
- Rear Camber



  


**No additional service needed**

 **Wheel Alignment** **FAILED**

- Front Total Toe
- Front Camber
- Rear Total Toe
- Rear Camber

Recommend comprehensive alignment check for added tire life, fuel economy and safety.

• Front and rear total toe

• Front and rear camber

• General alignment condition



**Did you know?** Approximately 50% of vehicles are out of alignment and an average four-wheel alignment represents \$90 in revenue.

\*Shown with optional Monitor Kit (20-2899-1)

# Quick Tread®

0:06  
SECONDS



Quick Tread® — Hunter's drive over tread depth unit — automatically measures the tread depth of each tire without a time loss. The unit detects tread grooves and reports up to six measurements per tire. Tread depth results are sent to the console and graphically shown on the customer printout.

PATENTED

Flush Mount Option Available

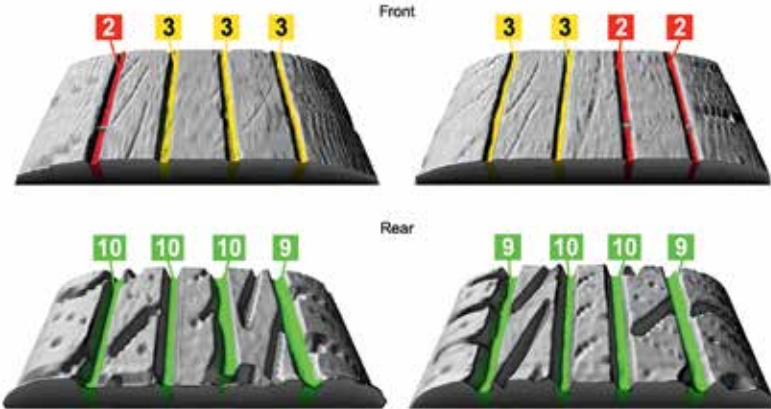


## *The benefits of Hunter's Quick Tread®...*

- ✓ Captures accurate tread data on all vehicle traffic
- ✓ No technician needed to determine tread depth
- ✓ Much faster than manual inspection
- ✓ Increases accuracy by eliminating guesswork
- ✓ Easy-to-understand printouts help sell tires
- ✓ Driven by award-winning WinAlign® software
- ✓ Measurements processed on-site in seconds
- ✓ No Internet connection required
- ✓ No recurring monthly charge
- ✓ Stores tread depth records to create customer history for use in your marketing efforts

## Quick Tread<sup>®</sup> Results

- ✓ Edge-to-edge measurement
- ✓ 280,00 data points across 2 inch segment of a tire
- ✓ Up to 6 tread readings per tire
- ✓ Displayed on screen
- ✓ Eliminates trips around the vehicle
- ✓ Eliminates human error and guesswork
- ✓ Accurately measures **wet, dirty tires**

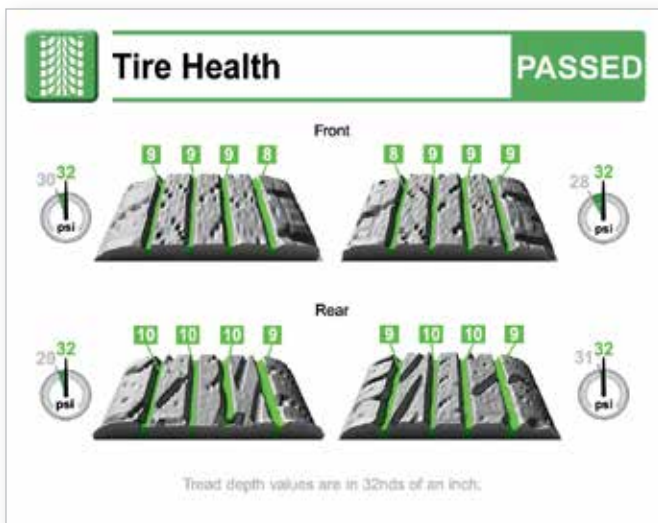


### Developing Quality Technology

Featuring Sigmavision's patented tire measurement technology, Hunter's drive over tread depth measurement system is the industry's fastest and most accurate. See Sigmavision's U.S. Patent No. 8625105 to learn more.



## Tread depth results your customers will see...



- 3D image of customer's tread
- Tread depth measurements
- General condition of tires
- Easy-to-understand pass/fail results
- Tire pressure\*



**Did you know?** Measurements taken by various operators using a manual tread depth gauge can vary  $\pm 3/32$  or more.

\* with Inflation Station option

# Handheld Tread Depth

0:34  
SECONDS

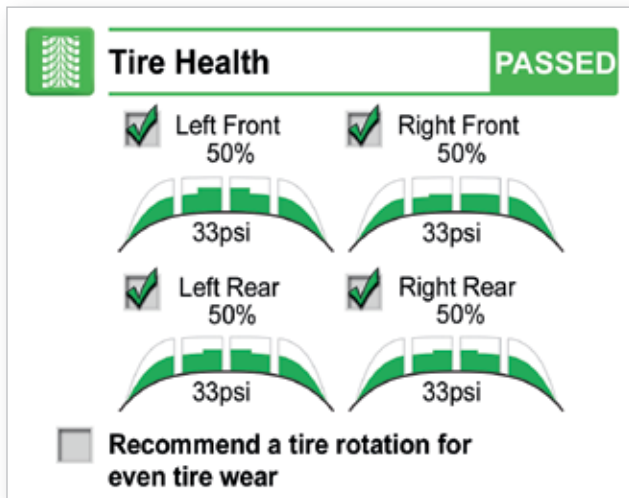


In about 30 seconds, Hunter's patented tread depth gauge provides a quick and easy assessment of tire conditions. Handheld tread depth can be used as an alternate to drive over tread depth when space or economy are constraints.

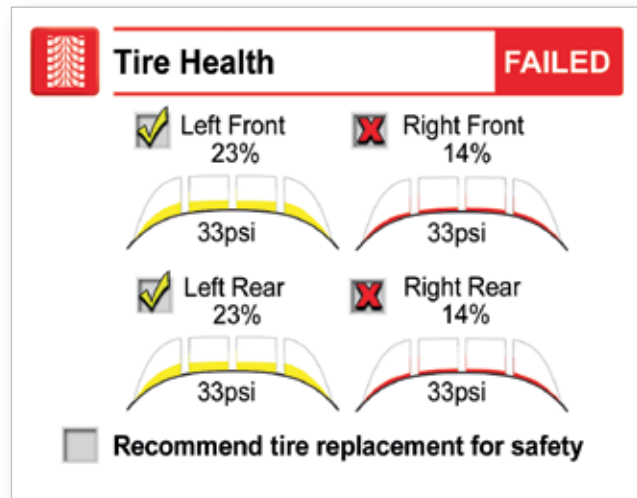


- ✓ Choose a 1- or 3-point reading per tire
- ✓ Wireless communication with console
- ✓ Measurements displayed on screen as collected
- ✓ Easy-to-understand printout displays need for replacement
- ✓ No need to manually interpret each reading
- ✓ No need to write down each reading
- ✓ Special condition alternate to drive over tread depth

## Tread depth results your customers will see...



- Percentage of tread depth remaining
- Tire pressure\*



- Graphic showing tread depth measured
- General condition of tires



**Did you know?** Over 20% of vehicles have one or more tires in need of replacement and an average tire replacement represents \$150 in revenue.



# Quick ID™

0:02  
SECONDS



Quick ID™ accelerates the vehicle inspection process by automatically identifying the vehicle in motion. Instantly capture VIN, year, make, model, and license plate without manual key strokes or barcode scans.

Drive the vehicle into your inspection lane

## Accelerate your vehicle inspection process

- ✓ Automatically identify vehicle
- ✓ Perform inspections faster and easier
- ✓ Negate backup in the inspection lane

## Unmatched performance

- ✓ State-of-the-art camera
- ✓ Extensive license plate coverage
- ✓ Industry-leading license-to-VIN database
- ✓ Flexible camera mounting options



1

Capture license plate image

Automatically in motion

-MO-  
AC6Z8S

2

Identify characters and locale

Never assume home state

4T1BF1FK  
XEU367523

3

Obtain VIN\*

No monthly subscription fees

Automatically determine vehicle year, make, model and alignment specifications



## Flexible camera installation options



- ✓ Indoor or outdoor; ceiling- or wall-mounted; front or rear license plate position

- ✓ Quick Tread® or Quick Check® camera trigger

# Battery Health

0:20  
SECONDS



Hunter's battery health test measures a battery's ability to carry electric current in about 20 seconds! The battery test uses patented technology from Midtronics, the industry leader in battery management, to give a quick, accurate evaluation of battery performance.



- ✓ The benefits of Hunter's battery health test...
- ✓ Simple operation — just clip to the battery
- ✓ Results automatically sent to the console wirelessly
- ✓ Battery evaluation based on comparison to OEM spec database
- ✓ Connects under the hood even on vehicles with batteries in remote locations
- ✓ Low-current test signal to prevent possible damage to sensitive electronic components
- ✓ Printout alerts customer of potential battery failure

## Battery test your customers will see...

**Battery Health** **PASSED**

State of Health

Voltage: 12.5 V

✓ Measured: 515 CCA  
OEM Ref.: 500 CCA

**Good battery**

**Battery Health** **TEST**

State of Health

Voltage: 12.3 V

✓ Measured: 387 CCA  
OEM Ref.: 585 CCA

**Recommend complete battery charging/  
starting system evaluation**

- Measured cold-cranking amps (CCA)
- Voltage
- OEM cold-cranking amps
- General battery performance



**Did you know?** Over 10% of vehicles have a battery-related issue and an average battery replacement represents \$110 in revenue.

# Diagnostic Check

0:10  
SECONDS





Hunter's CodeLink® for Quick Check® connects directly to a vehicle OBD-II port to retrieve important information concerning emission control components and vehicle identification number (VIN) in approximately 10 seconds.




- ✓ Automatically retrieves VIN
- ✓ Detects check engine light status
- ✓ Retrieves diagnostic trouble codes
- ✓ Checks emission monitor status
- ✓ Allows for entry of mileage and tire pressure specs into the system
- ✓ Wireless communication with console
- ✓ Compatible with all OBD-II vehicles (1996 or newer)


## Diagnostic results your customers will see...


 **Diagnostic Check** **PASSED**


✓ Check Engine Light - OFF 

✓ 0 Trouble Codes are present 

**No additional service needed**

 **Diagnostic Check** **FAILED**

✗ Check Engine Light - ON 

✗ 1 Trouble Code is present 

**Recommend advanced diagnostic for detailed proposal**

- Check engine light status
- Legislative trouble codes present
- General diagnostic system review



**Did you know?** Approximately 8% of vehicles have one or more check engine lights on and an average emission system repair represents \$150 in revenue

# Tire Inflation

0:10  
SECONDS



Hunter's Inflation Station is fully-integrated with Quick Check® system or available as stand alone unit.



PATENTED



## Integrated Inflation Station

- ✓ Automatically inflate all four tires simultaneously
- ✓ Save time by eliminating repeated manual checks
- ✓ Integrated inflation hoses located at each wheel position
- ✓ Tire pressures recorded on printout
- ✓ Meets CA BAR standard for tire pressure measurement

## Stand Alone Inflation Station



Shown fully-loaded with alignment targets, CodeLink® device, and battery tester.

## Tire pressure test results your customers will see...

- Beginning tire pressure
- Final tire pressure based on user specifications



**Tire Pressure**
**FAILED**

	!	<b>Front</b>		
		<b>Rear</b>		

Recommend a tire and wheel inspection. Irregular pressure detected.

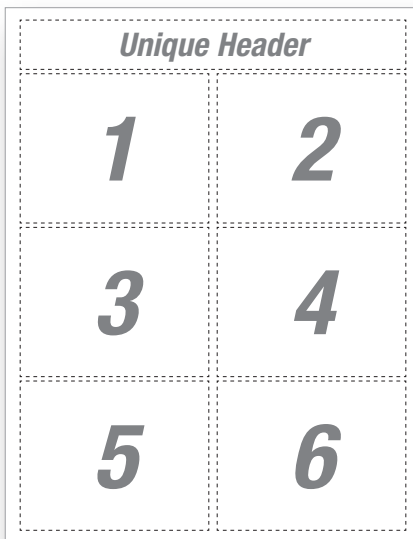
# Customize Your Printouts

Build a printout layout that is unique to your business and uses all of the available space on the printout.

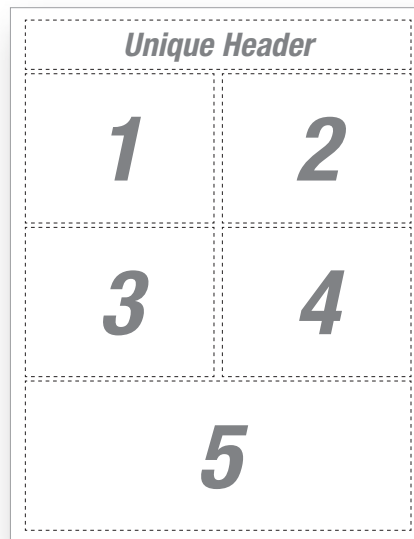
- ✓ Include your shop's logo, an advertising message, coupon, or any other services
- ✓ Provide customers up to two printouts — displaying simple and/or technical information — or keep one for your own records
- ✓ Select the format that has the highest impact with your customer



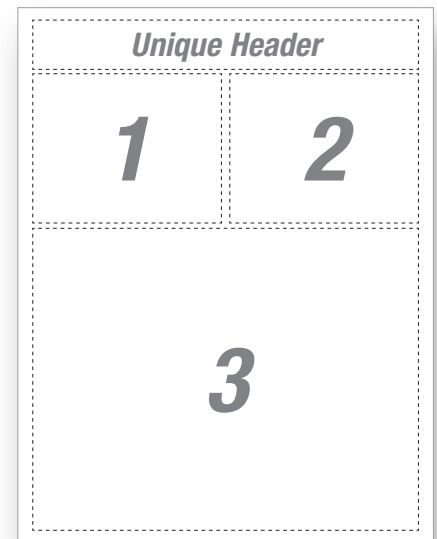
## Choose the best printout for your business



**Up to 6 customizable modules per page**



**Customize to fit your shop's unique needs**



**Highlight the features that will sell your services best**

**HUNTER** Welcome to Hunter Engineering Co. Mon-Fri: 8:15 am - 5:00 pm  
11200 Hunter Drive Sat: Closed  
Bridgeton, MO 63044 Sun: Closed  
Tel: (314) 731-3020 Alex Nicholas, Service Manager

**Complimentary Vehicle Inspection** **Wheel Alignment** **FAILED**

November 1, 2016 | 9:12 AM  
Toyota : Camry 4 cyl. : 2015

**Tire Pressure** **FAILED** **Diagnostic Check**

Check Engine Light - OFF  
5 Trouble Codes are present  
Onboard Diagnostics Test - NOT READY

**Tire Health** **FAILED** **Battery Health** **TEST**

Measured: 307 CCA Voltage: 12.3 V  
OSM Ref.: 885 CCA

Recommend complete battery charging/starting system evaluation

**HUNTER** Welcome to Hunter Engineering Co. Mon-Fri: 8:15 am - 5:00 pm  
11200 Hunter Drive Sat: Closed  
Bridgeton, MO 63044 Sun: Closed  
Tel: (314) 731-3020 Alex Nicholas, Service Manager

**Complimentary Vehicle Inspection** **Wheel Alignment** **FAILED**

November 1, 2016 | 3:37 PM  
Ford : Taurus 4x4 : 2016

**Diagnostic Check** **PASSED** **Battery Health** **PASSED**

Check Engine Light - OFF  
5 Trouble Codes are present  
Good battery

**Tire Health** **PASSED**

Left Side: 12.2 mm (0.48 in) Right Side: 12.2 mm (0.48 in)

**HUNTER** Welcome to Hunter Engineering Co. Mon-Fri: 8:15 am - 5:00 pm  
11200 Hunter Drive Sat: Closed  
Bridgeton, MO 63044 Sun: Closed  
Tel: (314) 731-3020 Alex Nicholas, Service Manager

**Complimentary Vehicle Inspection** **Wheel Alignment** **FAILED**

September 14, 2016 | 8:43 AM  
Lexus 2016 IS 350 F Sport

**Tire Health** **MARGINAL**

Front: 12.2 mm (0.48 in) Rear: 12.2 mm (0.48 in)

\*Requires webcam, sold separately.

# Selling Tools

Powered by



## **NEW!** Flightboard™

- ✓ Automatically display of alignment and tire tread results
- ✓ Designed for Service Drive or Waiting Area display monitor
- ✓ Complete customer transparency



## ShopResults™

- ✓ Quickly view vehicle service opportunities
- ✓ Access and email detailed inspection results



TAP FOR DETAILS



Desktop- and mobile-friendly

# Reporting Tools

Powered by

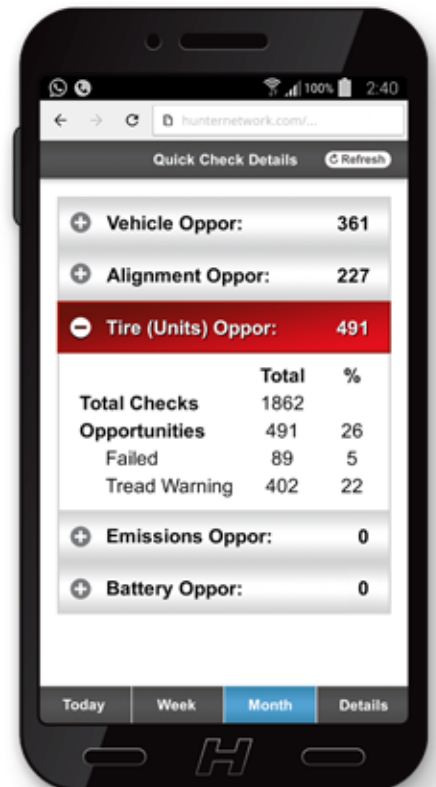


## **NEW!** Push Reports

- ✓ Automatic performance snapshots
- ✓ View inspection rates and opportunities
- ✓ Measure alignment numbers and conversions
- ✓ Track balancing and road force utilization
- ✓ Daily delivery by email and text

## Track Statistics and Generate Reports

- ✓ Closely analyze inspection rates and opportunities
- ✓ Analyze Quick Check® results and failure rates for specific test types
- ✓ See your service opportunities virtually anywhere, anytime



# Partner Integration

- ✓ Capture every service opportunity in a streamlined process
- ✓ Eliminate duplicate entries
- ✓ More satisfying experience for enthusiastic technicians
- ✓ Ensure profitable service recommendations are always presented to customer
- ✓ Choose your integration partner
- ✓ Maximize revenue and increase customer retention

*AutoPoint phone interface shown at right*



## Customer Intake

- ✓ Present digital inspection results
- ✓ Make tire replacement offer at the vehicle

## Electronic Multi-Point Inspection (EMPI)

- ✓ Automate electronic multi-point inspection items
- ✓ Capture digital photos and videos

## Digital Service Recommendations

- ✓ Mobile delivery of inspection results via text or email
- ✓ Self-guided, informative service experience



*AutoServe1 tablet interface shown above*

## Deferred Service Advertising

- ✓ Target advertising for unperformed service needs
- ✓ Potentially double your conversion rate

### Hunter Partners



... and more!



# Diagnostic Health Report

Powered by:



Quick Check® now has the capability to retrieve potential repair information in the inspection lane to help your customers to make more informed decisions and your shop to sell more diagnostic services.



CodeLink® retrieves important **vehicle information and VIN** directly from the OBD-II.

Quick Check® turns Identifix® repair data into an easy-to-read graph that displays the **likelihood of relevant repairs.**



A detailed list of **other possible repairs** by trouble code is also included.

To learn more, visit [Identifix.com/partners/Hunter](http://Identifix.com/partners/Hunter)

(Your logo)

Hunter Engineering Co.  
11250 Hunter Drive  
Bridgeton, MO 63044  
Tel: 314-731-3020

M-F: 8:15 am - 5:00 pm  
Sa: Closed  
Su: Closed  
Alex Nicholas, Service Manager

September 19, 2019 8:43 AM

**Chevrolet 2008-12 Malibu with Electric Power Steering**

1G1ZC5E01CF105791

### Diagnostic Health Report

**Diagnostic Trouble Code**

- P0101 MAF Sensor Performance
- P0171 Fuel Trim System Lean Bank 1
- P0443 EVAP Solenoid Control Circuit Malfunction

Powered by: **IDENTIFIX**

**Top Reported Repair**

Intake Air Boot

Intake Manifold Pressure Relief Valve

Evaporative Emissions (EVAP) Canister Purge Solenoid Valve Wiring

### Most Likely Repair Statistics

\* Top reported fix for each code

Repair Item	P0101	P0171	P0443
Intake Air Boot	High	Low	Low
Intake Manifold Plenum Gaskets	High	Low	Low
Evaporative Emissions (EVAP) Canister Purge Solenoid Valve Wiring	Low	High	High
Intake Manifold Pressure Relief Valve	Low	High	High
Fuse Box Terminals	Low	High	High
EVAP Canister Purge Solenoid Valve Connector	Low	High	High
EVAP System Hoses / Lines	Low	High	High
Intake Manifold Plenum	Low	High	High
Catalytic Converter(s)	Low	High	High
Intake Manifold Gasket(s)	Low	High	High
Vacuum Leak	Low	High	High
PCV Hose	Low	High	High
Powertrain Control Module (PCM)	Low	High	High

↑ More Likely Repair  
↓ Less Likely Repair

### Other Reported Repairs

<p>■ P0101: MAF Sensor Performance</p> <ul style="list-style-type: none"> <li>Intake Manifold Plenum w/P0171, P0174</li> <li>Vacuum Leak</li> <li>Intake Manifold Gasket(s) w/P0171, P0174</li> <li>Catalytic Converter(s)</li> </ul>	<p>■ P0171: Fuel Trim System Lean Bank 1</p> <ul style="list-style-type: none"> <li>Intake Air Boot</li> <li>Intake Manifold Plenum Baskets w/P0174</li> <li>Throttle Body Gasket w/P0174</li> <li>Crankcase Ventilation Control Valve w/P0174</li> <li>Rubber Plenum Duct w/P0174</li> <li>Powertrain Control Module (PCM)</li> <li>PCV Hose w/P0174</li> </ul>	<p>■ P0443: EVAP Solenoid Control Circuit Malfunction</p> <ul style="list-style-type: none"> <li>Evaporative Emission (EVAP) System Hose(s)/Line(s)</li> <li>Evaporative Emissions (EVAP) Canister Purge Solenoid/Valve</li> <li>Fuse Box Terminals w/P0102, P0412, P0418</li> <li>IGN1 Fuse w/P0102, P0412, P0418</li> </ul>
---	--	---

SAMPLE

VIN entry required.

Requires subscription to Code Assist from Identifix, separate from Direct Hit.

Requires WinAlign® 15.0 or newer

# Return on investment



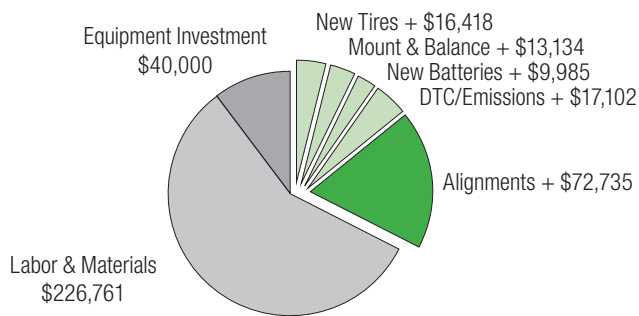
## Sample Payback Analysis

Vehicles per day = **25**

Days per week = **5.5**

	Current Daily Units		Shop Charge	=	Daily Revenue	x	Profit Rate <sup>1</sup>	=	Daily Profit	Est. Failure Rate <sup>2</sup>	Additional Daily Unit Opportunity	Actual Accepted Units
<b>New Tires</b>	<b>8</b>	x	<b>\$120</b>	=	<b>\$960</b>	x	<b>10%</b>	=	<b>\$96</b>	<b>13%</b>	<b>+12</b>	<b>+5</b>
<b>Mount &amp; Balance</b>	<b>8</b>	x	<b>\$15</b>	=	<b>\$120</b>	x	<b>64%</b>	=	<b>\$76</b>	<b>13%</b>	<b>+12</b>	<b>+5</b>
<b>New Batteries</b>	<b>2</b>	x	<b>\$115</b>	=	<b>\$230</b>	x	<b>33%</b>	=	<b>\$75</b>	<b>10%</b>	<b>+2</b>	<b>+1</b>
<b>DTC/Emissions</b>	<b>2</b>	x	<b>\$130</b>	=	<b>\$260</b>	x	<b>50%</b>	=	<b>\$130</b>	<b>10%</b>	<b>+2</b>	<b>+1</b>
<b>Wheel Alignments</b>	<b>3</b>	x	<b>\$85</b>	=	<b>\$255</b>	x	<b>68%</b>	=	<b>\$173</b>	<b>50%</b>	<b>+11</b>	<b>+4</b>
					<b>\$1,825</b>				<b>\$550</b>			
Equipment Investment			<b>\$40,000</b>							Your Customer's Acceptance Rate (avg)	<b>40%</b>	

## First Year Additional Profit Summary



	Acceptance Rate at 40%	Additional Profit
<b>New Tires</b>	<b>+1,368</b>	<b>+\$16,418</b>
<b>Mount &amp; Balance</b>	<b>+1,368</b>	<b>+\$13,134</b>
<b>New Batteries</b>	<b>+263</b>	<b>+\$9,985</b>
<b>DTC/Emissions</b>	<b>+263</b>	<b>+\$17,102</b>
<b>Wheel Alignments</b>	<b>+1,258</b>	<b>+\$72,735</b>
<b>Total</b>		<b>\$129,377</b>
<b>1st year profit (Less Investment):</b>		<b>\$89,377</b>
<b>10 year profit:</b>		<b>\$1,253,773</b>

## Alternative Payback at Different Acceptance Rates

Acceptance Rate	30%	35%	40%	45%	50%
<b>Pay Back</b>	<b>4.9 months</b>	<b>4.2 months</b>	<b>3.7 months</b>	<b>3.3 months</b>	<b>3.0 months</b>
<b>1st Year Profit</b>	<b>\$57,033</b>	<b>\$73,205</b>	<b>\$89,377</b>	<b>\$105,549</b>	<b>\$121,721</b>
<b>10 Year Profit</b>	<b>\$930,330</b>	<b>\$1,092,051</b>	<b>\$1,253,773</b>	<b>\$1,415,495</b>	<b>\$1,577,217</b>

<sup>1</sup> Default profit rate based on Modern Tire Dealer automotive service survey, 2016.

<sup>2</sup> Default failure rates based on Hunter estimates.

# Benefits of adding a Quick Check<sup>®</sup> system...



## Increase Service Profitability

- ✓ Quickly identify profitable service opportunities
- ✓ Generate professional customer report
- ✓ Recommend needed services to customers
- ✓ Secure more repair authorizations
- ✓ Generate more service revenue and profit

## Increase Customer Retention

- ✓ Ensure customer is driving a safe and reliable vehicle
- ✓ Correct and prevent issues before becoming a greater concern
- ✓ Deliver good news to customers for passed inspection items
- ✓ Win more tire replacement business, a key customer defection point
- ✓ Provide value added service for customer to always choose your shop

