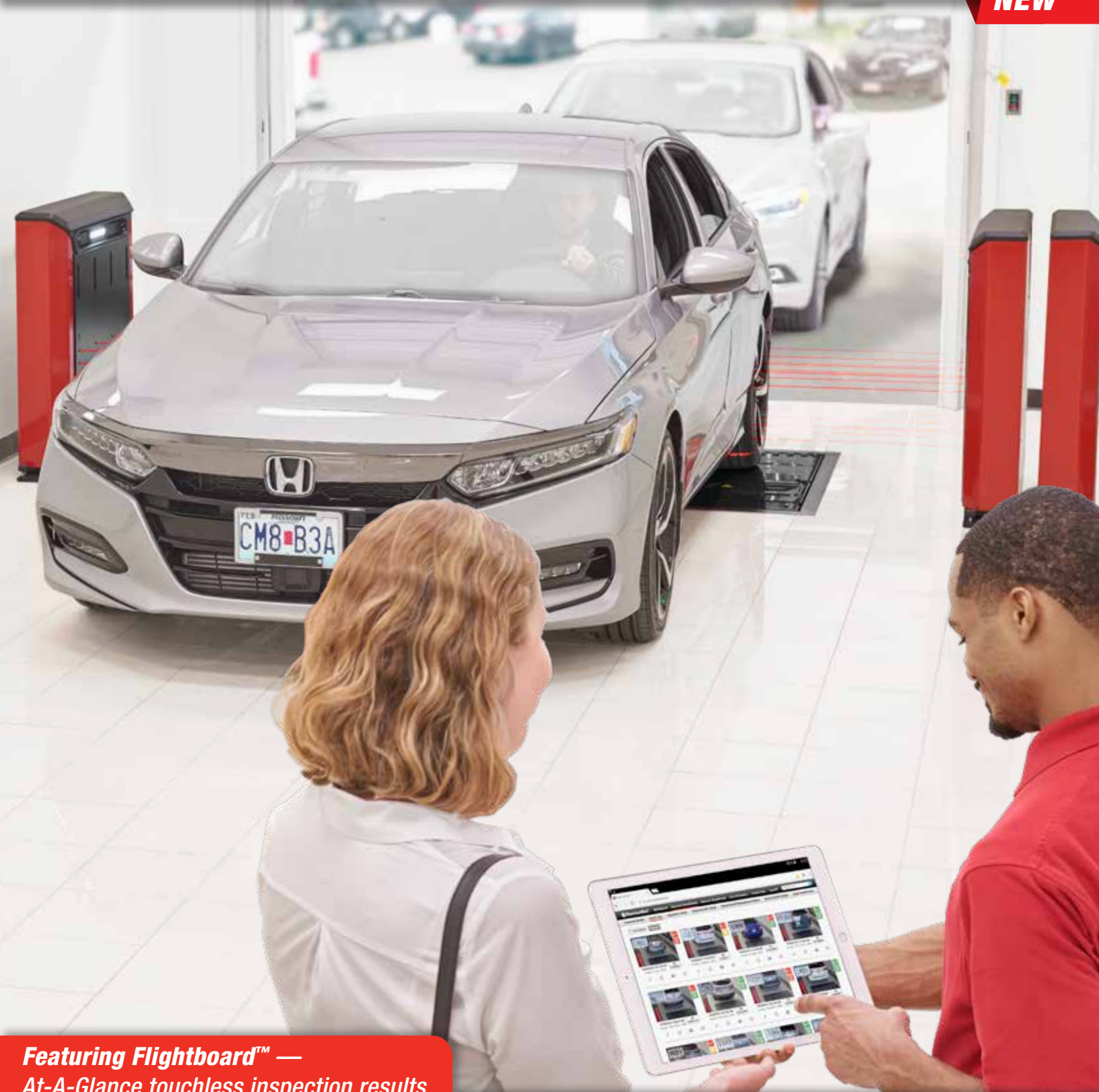


# Quick Check Drive™ Inspection

Autonomous Alignment and Tread Depth for the Service Drive

**NEW**



Featuring Flightboard™ —  
At-A-Glance touchless inspection results

Vehicle



Toyota : RAV4 4X2 : 2015

MO AH1Y9C

11:43

Wheel Alignment



Recommend a comprehensive alignment check

May require Safety System Alignment®

Front Tires



Rear Tires



# Unmanned Inspection At-A-Glance

PATENTED

## Automatic Alignment Results

- ✓ **Quick Check Drive™** — Touchless total toe and individual camber
- ✓ **Quick Tread Edge™** — Measures tread depth, analyzes data on-site, and instantly displays results
- ✓ **Boost most profitable undercar services**
- ✓ **No additional labor required**

**PLEASE  
DRIVE  
FORWARD**

**NO STOPPING**



**NO LABOR**



**NO DATA ENTRY**



**Quick Check Drive™** —  
A powerful autonomous  
alignment inspection system!

**Quick Tread Edge™** —  
Touchless tread depth with  
edge wear detection!

OPTIONAL  
External Camera



PATENT PENDING

**Vehicle Identification —  
Automatically determine OEM  
specs on most vehicles**



**Optional Damage-Cam Feature**



Automatic body photos  
protect against mistaken  
damage claims

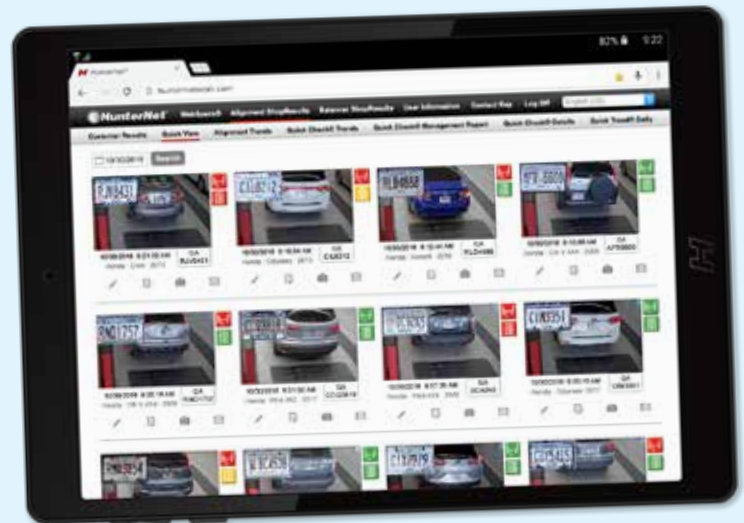


## Get Results Your Way

**Flightboard™** — Customers see findings live

HARRISON Auto Mall		Welcome to Harrison Auto Mall		Wheel Alignment	Front Tires	Rear Tires
Vehicle	Toyota : RAV4 4X2 : 2015 MO AH1Y9C 11:43	Recommend a comprehensive alignment check May require Safety System Alignment*				
Vehicle	GMC : Sierra 4X4 1500... : 2014 MO 0PW145 11:36	All measured angles passed				
Vehicle	Subaru : Legacy Outback : 2016 IL Z956919 11:32	Further selection required				
Vehicle	Toyota : Prius : 2008 IL AU54501 11:29	Recommend a comprehensive alignment check May require Safety System Alignment*				
Vehicle	Jeep : Patriot MK 4X4 : 2017 MO DN0Z7G 11:24	All measured angles passed				
Vehicle	Chevrolet : S10 Pickup 4X4 ... : 1998 MO 0CA823 11:21	Recommend a comprehensive alignment check				
Vehicle	Chevrolet : Silverado 4X4 T800... : 2007 MO 78J244 11:19	All measured angles passed				

**Shop Results** — View and present inspection results from any PC with internet connection



**Push Reports** — Daily delivery of inspection rates, opportunities, alignment numbers, and conversions by email and text

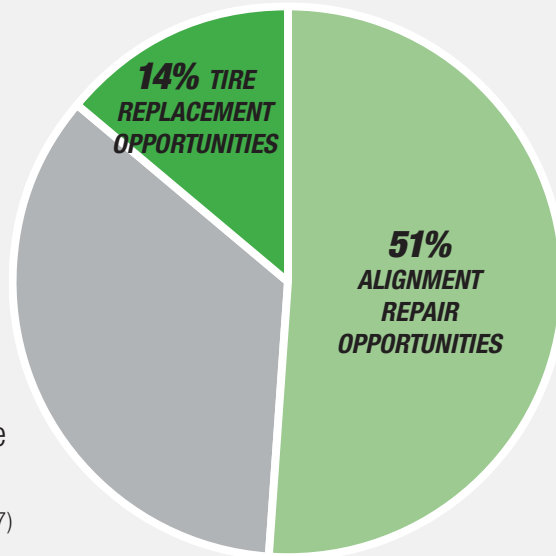


External identification camera sold separately.

# Autonomously Identify Today's Most Profitable Service Opportunities

**\$4,000\***  
Potential Tire Revenue Opportunity Per Day

Tire sales are critical to customer retention. Plus, the first to show the tire need and ask for the sale gets the order 85% of the time. (NADA 2017)



**\$2,500\***  
Potential Alignment Revenue Opportunity Per Day

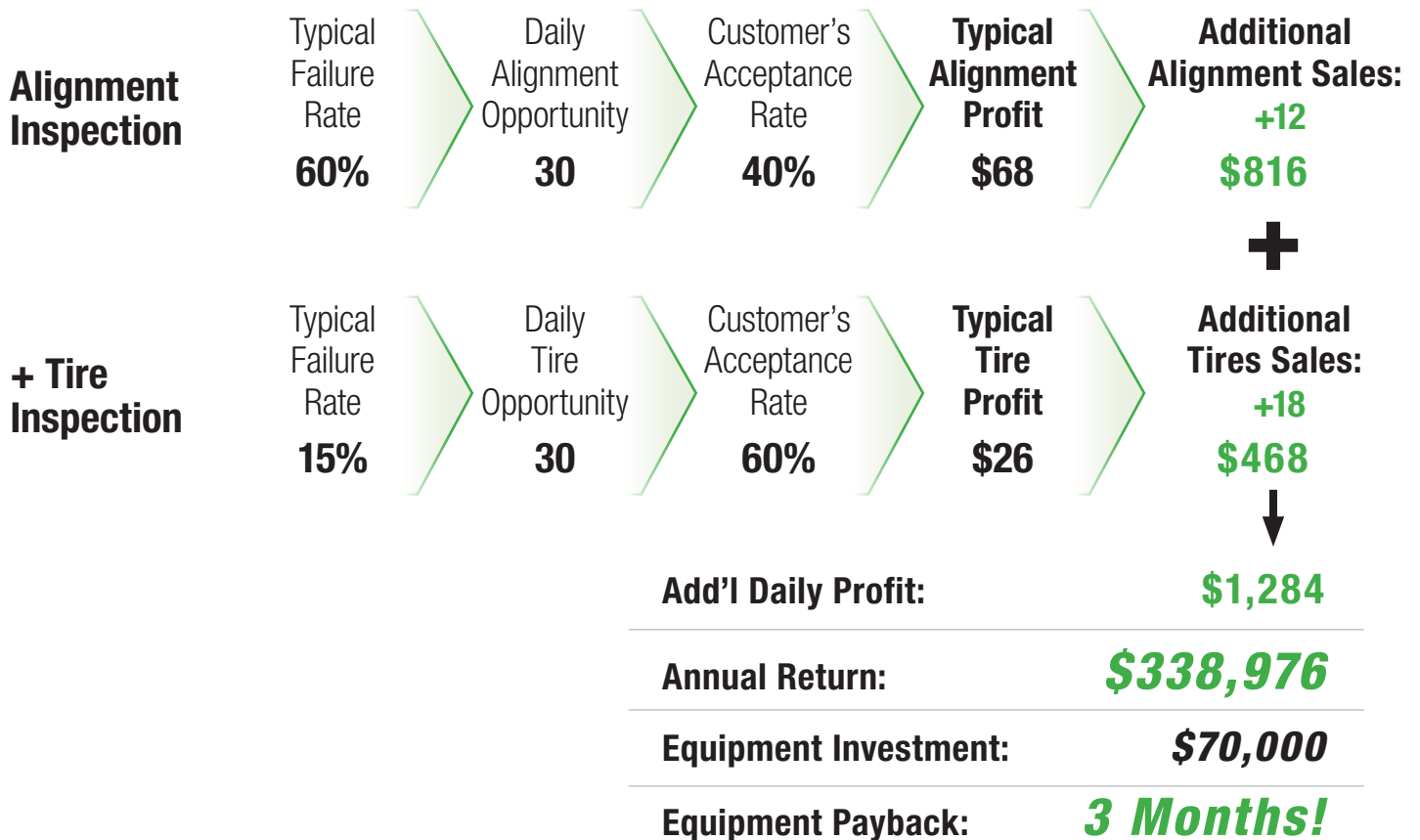
Alignment service has the highest margin in your service department. 68% of an alignment sale is profit. (MTD 2016)

\*Based on 50 vehicles per day shop average, an average tire replacement of \$150 in revenue, and an average four-wheel alignment of \$100 in revenue.

Alignment and tire wear data from Hunter's 25,000 Vehicle Study.

## Return On Investment

**Vehicles/day: 50**



# Selling and Reporting Tools

Powered by  **HunterNet**<sup>®</sup>

**Increase your productivity and revenue with HunterNet<sup>®</sup> selling tools.**

- ✓ Display and view results automatically
- ✓ Present and email inspection details digitally
- ✓ Inform customers with photos and videos



**Measure inspection performance and pinpoint improvement opportunities with reporting tools.**

## ✓ Push Reports **NEW!**

- Automatic performance snapshots
- View inspection rates and opportunities
- Measure alignment numbers and conversions
- Daily delivery by email and text



## ✓ Track Statistics and Generate Reports

- Closely analyze inspection rates and opportunities
- Analyze Quick Check<sup>®</sup> results and failure rates for specific test types

## **NEW** Partner Integration

- ✓ Integrate with leading industry software
- ✓ Secure more service authorizations
- ✓ Provide a better customer experience

### Hunter Partners

auto**point**

**DealerTire**<sup>®</sup>

Auto**Loop**  
Retention Through Engagement

**Auto Serve 1**

**BOLT ON**<sup>®</sup>  
TECHNOLOGY

**AutoVitals**<sup>®</sup>

**frogdata**

Code Assist by  
**IDENTIFIX**<sup>®</sup>  
FIND AND FIX FASTER.

AutoPoint sample phone interface



... and more!

# Autonomous Alignment Audit

## Compact and Powerful

- ✓ Laser and optical technology provides unmatched accuracy
- ✓ System distinguishes tire from other elements of the vehicle
- ✓ Hunter's complete OEM specification database saves time and avoids comebacks

### Four High-Definition Cameras

- ✓ License plate images identify vehicle
- ✓ Optional: 40 or more still images captured as vehicle drives past to defend against false damage claims

### 8 Cameras and 32 Laser Sensors

- ✓ Accurately inspect camber and total toe
- ✓ 16 measurements taken to increase accuracy
- ✓ Repeatable results

### Intelligent and Fast

- ✓ Scan a new vehicles every 3 to 5 seconds
- ✓ Only activates when vehicle is present

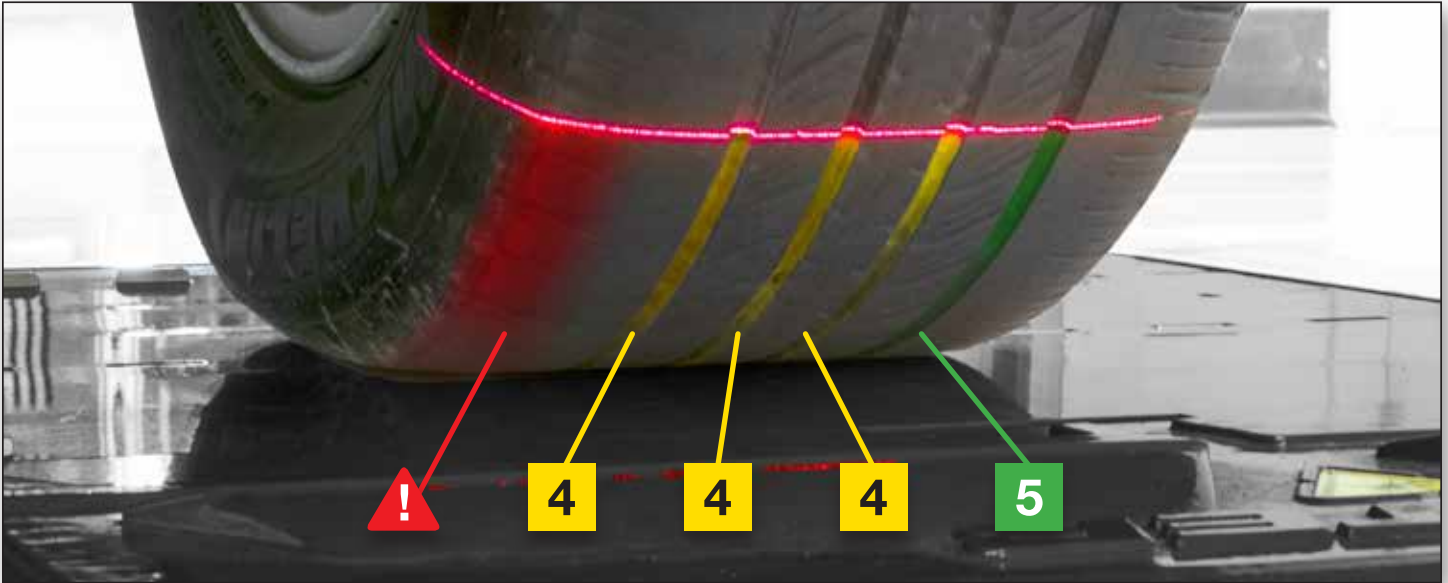


**How It Works...** *As the vehicle drives through, cameras measure distances to the tire to calculate total toe and individual camber.*

*Hunter's patented system acquires up to 16 results. Measurement outliers are removed and the other results are averaged to provide utmost accuracy.*



# Autonomous Tread and Edge Wear Measurement

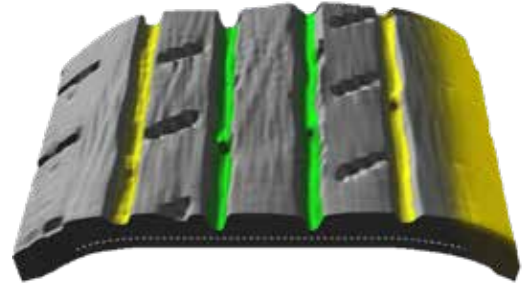


**Quick Tread Edge™** — Hunter's tread depth unit with tire edge wear detection — automatically measures the tread depth of each tire from edge to edge in seconds.

- ✓ Captures accurate tread information on all vehicle traffic
- ✓ Increases accuracy by eliminating guesswork and manual inspection
- ✓ Detects tread grooves and reports up to six measurements per tire
- ✓ Results sent to console and graphically shown for customer
- ✓ Built with corrosion-resistant stainless steel, includes self-cleaning air knife

## Added Benefits

- ✓ Flush-mounted configuration integrates seamlessly with Quick Check Drive™
- ✓ Stores tread depth records to create customer history for use in marketing efforts
- ✓ No recurring monthly charge



PATENT PENDING

# Automatic Vehicle Identification

Standard, built-in cameras capture vehicle's license plate as it enters or exits the Quick Check Drive™ unit's field of vision. Automatically determine OEM specs on most vehicles.

Captures front and rear license plates



1

Capture license plate image

Automatically in motion

-MO-  
WG7R2Y

2

Identify characters and locale

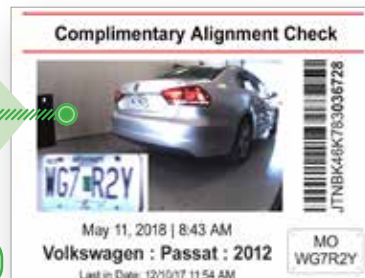
Never assume home state

JTNBK46K  
783036728

3

Obtain VIN\*

No monthly subscription fees



Powered by: **CARFAX**  
VEHICLE HISTORY REPORTS

\* Internet connection required, powered by CARFAX™

Automatically determine vehicle year, make, model and alignment specifications



## SmartPlate Alternative for Some Areas



1

Capture license plate in motion

-QB-  
X16 PKQ

2

Identify characters and locale

Enter vehicle ID manually on first visit

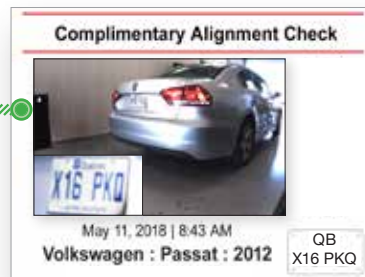
IDI

Volkswagen :  
Passat : 2012

3

Obtain vehicle identity\*

SmartPlate automatically recalls vehicle identity and alignment specifications from previous visits\*



\* Vehicle identity must be entered manually at initial visit. SmartPlate requires an active HunterNet® account.

OPTIONAL

## External Camera Available for Challenging Situations

✓ Identify characters better, more often



Standard camera resolution



Optional Quick ID™ camera resolution



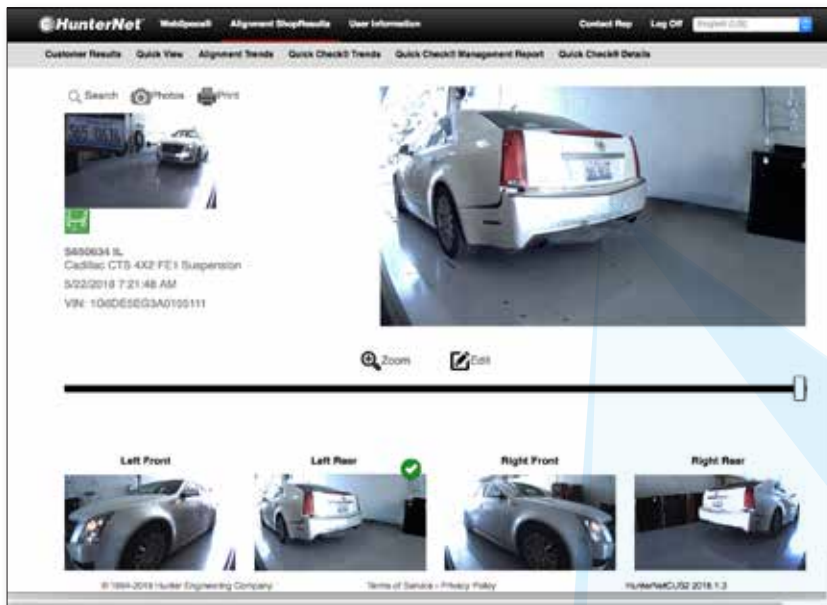
\* See form 7563-T for a map of states with challenging license plates.



OPTIONAL

# Automatic Body Image Capture

Using the same built-in high-definition cameras, *Damage-Cam* enables your dealership to capture 40 or more images per vehicle in the same time it takes to check wheel alignment.



- ✓ Save your dealership thousands of dollars in false vehicle-damage claims
- ✓ Immediate access to your Damage-Cam images — no need to contact a third-party surveillance company and wait for the images
- ✓ Camera location optimal to capture body images

## Use HunterNet® to quickly review vehicle images

- ✓ Intuitive Damage-Cam interface displays vehicle information and date of service
- ✓ Four cameras capture an average of 10 images each
- ✓ 15-day image storage standard
- ✓ Premium 90-day storage package available



**Did you know?** Body damage cameras can save thousands of dollars per month on false damage claims. It is not uncommon for customers to be “mistaken” about when damage occurs.

# Choosing the Right Alignment Inspection System

Hunter's Quick Check Drive™ is the industry's first truly unmanned and repeatable touchless alignment check solution.

- ✓ Quick Check Drive™ uses a total of 32 lasers and 8 cameras for unmatched accuracy
- ✓ Measure both camber and total toe to greatly increase alignment opportunities
- ✓ Integrated license plate cameras automatically identifies vehicle and alignment specifications



Hunter Quick Check Drive™

VS.



Competitor

## Fully-Autonomous System

- Total toe measurement  
**AUTOMATIC**
- Camber measurement  
**AUTOMATIC**
- Automatic plate-to-spec  
**INCLUDED**
- Body damage cameras  
**OPTIONAL DAMAGE-CAM**
- Error recognition  
**AUTOMATIC**
- Service and support  
**400+ Field Reps BACKED BY HUNTER**
- Proven Accuracy  
**from Alignment Leader**

## Labor Required System

- Toe measurement  
**AUTOMATIC**
- Camber measurement
- Automatic plate-to-specs
- Body damage cameras
- Error recognition
- Service and support
- Proven Accuracy



**Did you know?** Using a single set of measurements can lead to inaccurate results — meaning misinformed customers and missed service opportunities.

# Choosing the Right Tread Inspection System

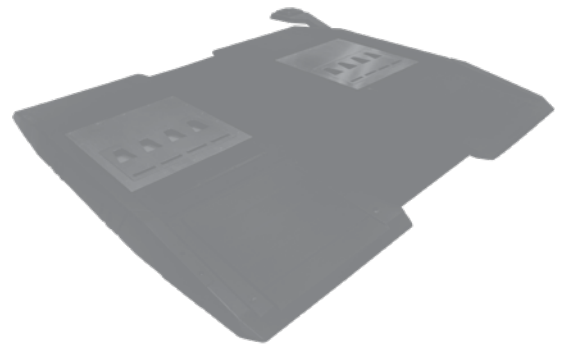
Hunter's Quick Tread Edge™ provides more information in less time with greater reliability than any other drive over tread depth system.

- ✓ Quick Tread Edge™ provides unmatched accuracy and clarity of every tire from edge-to-edge
- ✓ Unsurpassed environmental protection means your Quick Tread Edge™ works, rain or shine
- ✓ Produces stunning 3D images of every tire, every time with no stopping or labor required



Hunter Quick Tread® Edge

VS.



Competitor

## Edge-to-Edge System

- ✓ Automatic tread scan  
*3D tire scan, edge-to-edge*
- ✓ Tread wear data collection  
*280,000+ data points*
- ✓ Accurate alignment check option  
*Compatible with Quick Check® Drive*
- ✓ Weather-resistant protection  
*Tested in real-world conditions*
- ✓ Durable construction  
*Stainless steel*
- ✓ Service and Support  
*400+ Field Reps BACKED BY HUNTER*
- ✓ No monthly charges

## Traditional System

- ✓ Automatic tread scan  
*Single line scan*
- ✓ Tread wear data collection  
*400+ data points*
- Accurate alignment check option
- Weather-resistant protection
- Durable construction  
*Plastic composite*



**Did you know?** In a recent 25,000 vehicle study, 51% of all vehicles had no irregular tire wear, but needed an alignment. Only 10% had irregular wear and needed an alignment.

# Configurations for Every Shop\*

**Integrate Quick Check Drive™ with flush-mounted Quick Tread Edge™ to build the most profitable unmanned inspection system.**

Quick Tread Edge™ can be installed individually as a surface- or flush-mounted unit.



## **Flush-Mount Quick Tread Edge™** (with alternate WU572 console)

- ✓ Smooth approach
- ✓ Zero obstructions
- ✓ Compatible with Quick Check Drive™



## **Surface-Mount Quick Tread Edge™** (with standard wall-mounted console)

- ✓ Low stack height (3.4 in.)
- ✓ Simple installation
- ✓ Extended and angled kits available

### **Site Considerations:**

- ✓ Hardwired internet connection required for Quick Check Drive™
- ✓ Weather protection recommended as warranted by local conditions
- ✓ Impact protection recommended as warranted by lane layout
- ✓ Body cameras and vehicle ID performance require uniform and reasonably bright lane lighting



**Please see your Hunter Sales Representative for details**

**Be sure to check out other Hunter literature for more quality products from Hunter Engineering.**

*Quick Check Drive, Quick Tread Edge, and Quick ID are trademarks of Hunter Engineering Company.*

*Quick Check, Quick Tread, HunterNet, and WinAlign are registered trademarks of Hunter Engineering Company.*



**HUNTER**  
**Engineering Company.**

[www.hunter.com](http://www.hunter.com)